



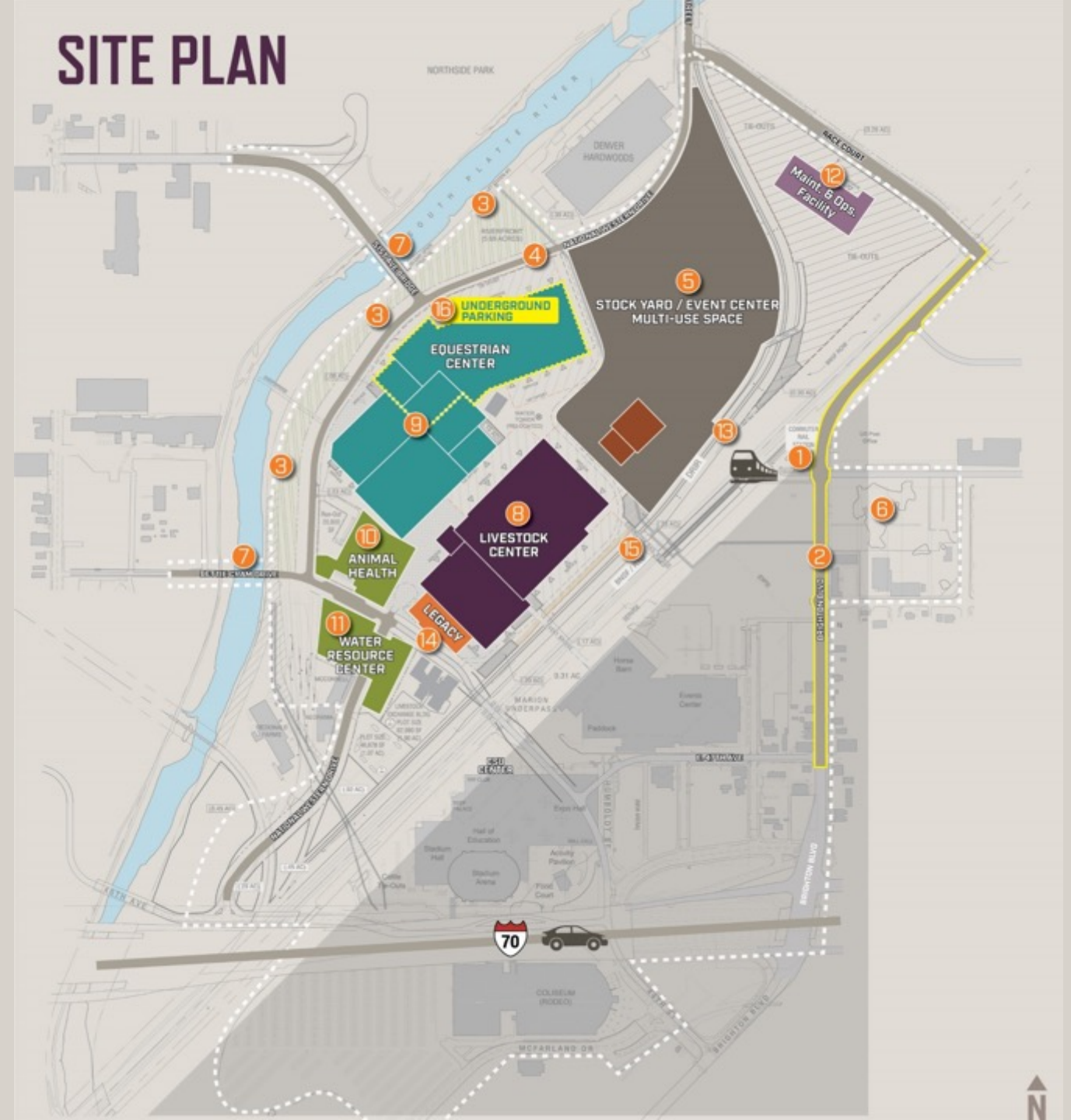
# PROGRAM UPDATE CAC

IMAGINE. DISCOVER. CULTIVATE.

April 25, 2019

# NWC SITE PLAN

1. RTD Transit Station
2. Brighton Blvd. – 47<sup>th</sup> to Race Court
3. South Platte Riverfront
4. New National Western Drive
5. Stock Yard/Event Center Multi-Use Space
6. Campus-Related TOB
7. New Bridges Near 48<sup>th</sup> & 51<sup>st</sup> Avenues
8. Livestock Center
9. Equestrian Center
10. CSU Animal Health Facility
11. CSU Water Resources Center
12. Maintenance & Operations Facility
13. DRIR Rail Corridor
14. WSSA Legacy Building
15. Pedestrian Bridge
16. Underground Parking



# COMPLETED PROCUREMENTS

<b>Campus Placemaking</b> <b>MIG, Inc.</b> <ul style="list-style-type: none"> <li>• Design</li> <li>• M/WBE Goal of 24%</li> </ul>	<b>Integrated Demolition</b> <b>Saunders Construction</b> <ul style="list-style-type: none"> <li>• Integrated Demolition</li> <li>• M/WBE Goal of 18%</li> </ul>	<b>Brighton Boulevard - 3</b> <b>Kiewit / Hamon</b> <ul style="list-style-type: none"> <li>• Integrated Construction</li> <li>• M/WBE Goal of 14%</li> </ul>	<b>Maintenance &amp; Ops</b> <b>SEH, Inc.</b> <ul style="list-style-type: none"> <li>• Design</li> <li>• M/WBE Goal of 30%</li> </ul>	<b>Maintenance &amp; Ops</b> <b>GH Phipps</b> <ul style="list-style-type: none"> <li>• CM/GC</li> <li>• M/WBE Goal of 28%</li> </ul>
<b>DRIR Railroad</b> <b>Wilson &amp; Company</b> <ul style="list-style-type: none"> <li>• Design</li> <li>• M/WBE Goal of 14%</li> </ul>	<b>Horizontal Portfolio</b> <b>Merrick &amp; Company</b> <ul style="list-style-type: none"> <li>• Design</li> <li>• M/WBE Goal of 23%</li> </ul>	<b>Horizontal Integrated</b> <b>Hensel Phelps</b> <ul style="list-style-type: none"> <li>• Integrated Construction</li> <li>• M/WBE Goals - work order</li> </ul>	<b>Stock Yards / Event Ctr.</b> <b>HKS</b> <ul style="list-style-type: none"> <li>• Design</li> <li>• M/WBE Goal of 30%</li> </ul>	<b>Stock Yards / Event Ctr.</b> <b>Adolfson and Peterson</b> <ul style="list-style-type: none"> <li>• CM/GC</li> <li>• M/WBE Goal of 17%</li> </ul>
<b>Equestrian Center &amp; Parking Garage</b> <b>Populous</b> <ul style="list-style-type: none"> <li>• Design</li> <li>• M/WBE Goal of 24%</li> </ul>	<b>Equestrian Center &amp; Parking Garage</b> <b>Active Procurement</b> <ul style="list-style-type: none"> <li>• CM/GC</li> <li>• M/WBE Goal of 20%</li> </ul>	<b>Campus District Energy</b> <b>EAS Partners</b> <ul style="list-style-type: none"> <li>• Active Procurement in the Predevelopment Phase</li> </ul>		



# FUTURE PROCUREMENTS

## Equestrian Center & Parking Garage

### CM/GC

RFQ: Active  
M/WBE Goal of 20%

Separate Design & Construction contracts for the Equestrian Center and Parking Garage, including:

- 4,500 Seat Event Center
- 500 Equestrian Show Arena
- 700-800 stall Horse Barn
- Two Paddocks and Covered Open-Air Warm Up areas
- 1,050 car Parking Garage

## Livestock Center

### DESIGN

RFQ: Mid 2019  
Est. RFP: Mid-late 2019

### CM/GC

RFQ: Mid-late 2019  
Est. RFP: Mid-late 2019

Separate Design & Construction contracts for the Livestock Center including:

- 3000 seat (expandable to 5000 seats) Stadium Arena
- 700 seat Auction Arena
- 200,000 s.f. Livestock Hall
- Multi-Use and flexible spaces



# NWC WORKFORCE INITIATIVES

- Increase awareness, outreach, training and employment for people from economically disadvantaged areas and populations.
- Diversify and connect businesses competing for government contracts.



<sup>1</sup>Division of Small Business Opportunity

<sup>2</sup>Business Equity Leadership Team



# HISTORIC SALVAGE UPDATE

- The iconic stockyards have been a long-running land use and main stay of the National Western Stock Show since 1906.
- NWCO is salvaging metal hardware, wood, bricks, water troughs and associated infrastructure to be reintegrated into the future campus.
- These materials have been catalogued and stored and will be made available to architects, designers and artists for use within the public spaces and common areas.



BEFORE



AFTER

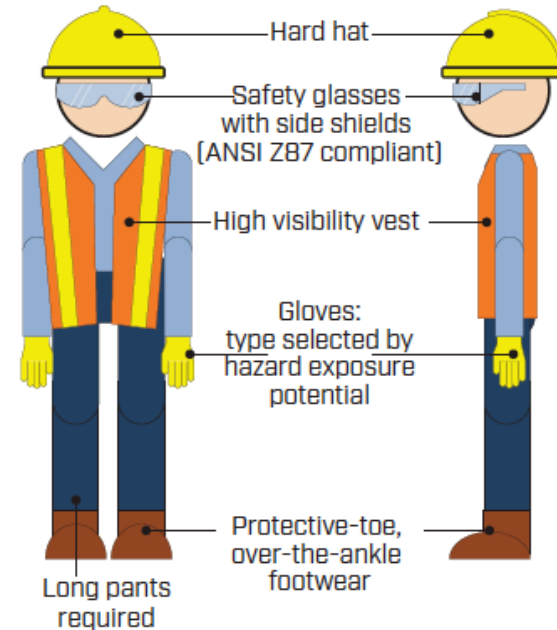
# CONTROLS AND CAMPUS MOVE



## WARNING CONSTRUCTION AREA PPE REQUIRED

VISITORS MUST CHECK IN AT  
HIC FIELD OFFICE AT 5115 RACE CT.

### PERSONAL PROTECTIVE EQUIPMENT (PPE)



Connect with Us | 311 | [nationalwesterncenter.com](http://nationalwesterncenter.com)





IMAGINE. DISCOVER. CULTIVATE.

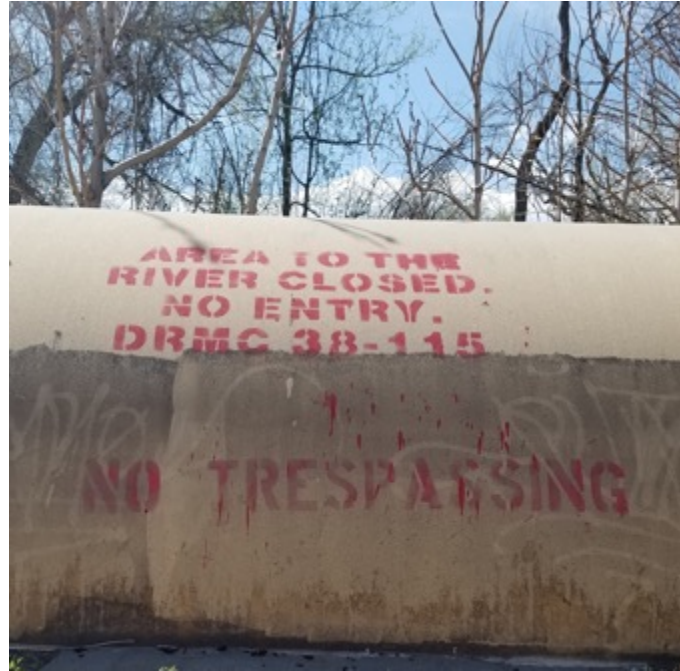




# PHASES I & II



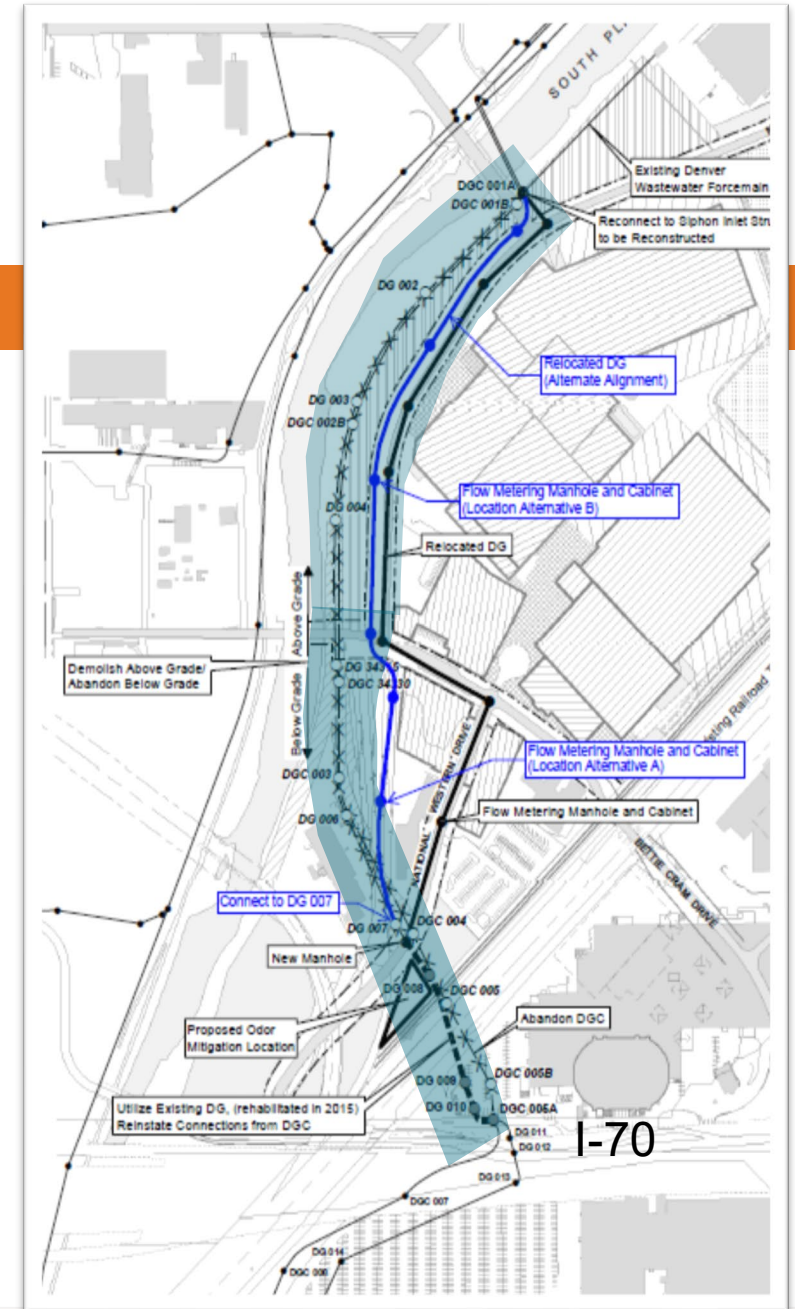
# EXISTING RIVERFRONT



# METRO WASTEWATER IGA

## IGA: Intergovernmental Agreement

- Three primary objectives:
  1. Relocate and bury the Delgany Interceptor
  2. Provide access to sewer heat for the NWC Campus Energy Partner
  3. Mitigate odors from the Delgany via a new biofilter
- Metro Board and City Council approved



# RIVERFRONT OPEN SPACE - PROCESS

- Campus Placemaking – Complete
  - Includes Design Standards and Guidelines and Design Handbook
- Program Refinement: NWC Authority Cultivate process, potential new stakeholders
- Revised Conceptual Design
- Stakeholder and Community Feedback
- Seek funding & partners
- Final Design
- Construction



# ENGAGEMENT & OUTREACH

- NWC Citizens Advisory Committee – Ongoing regular updates
- Campus Placemaking - Complete
  - User experience interviews (e.g. elementary school parents)
  - Stakeholder meetings and focus groups
  - Public Realm programming ideas
  - Public meetings
  - Design Standards and Guidelines/Design Handbook
- Program and Concept Design Review (2019)
  - Riverfront Stakeholder Group



# NEIGHBORHOOD CONNECTIVITY

## Regional Bike Trail Connections

### LEGEND

- Building Footprint
- Street
- Parcel
- RTD Rail Station
- Railroad
- Park/Open Space
- Water Body
- Existing Regional Bike Facilities\*
- Existing Neighborhood Bike Facilities\*
- Proposed Neighborhood Bike Facilities\*
- Potential Future Bike Facility\*
- NWC Gateway - Phase I
- NWC Gateway - Phase II
- Pedestrian/Bike Bridge
- Proposed Pedestrian/Bike Bridge
- Potential Bike Facility Improvement
- Future Trail Connection
- Intersection / Connection Improvement

#### Regional Connection to NWC

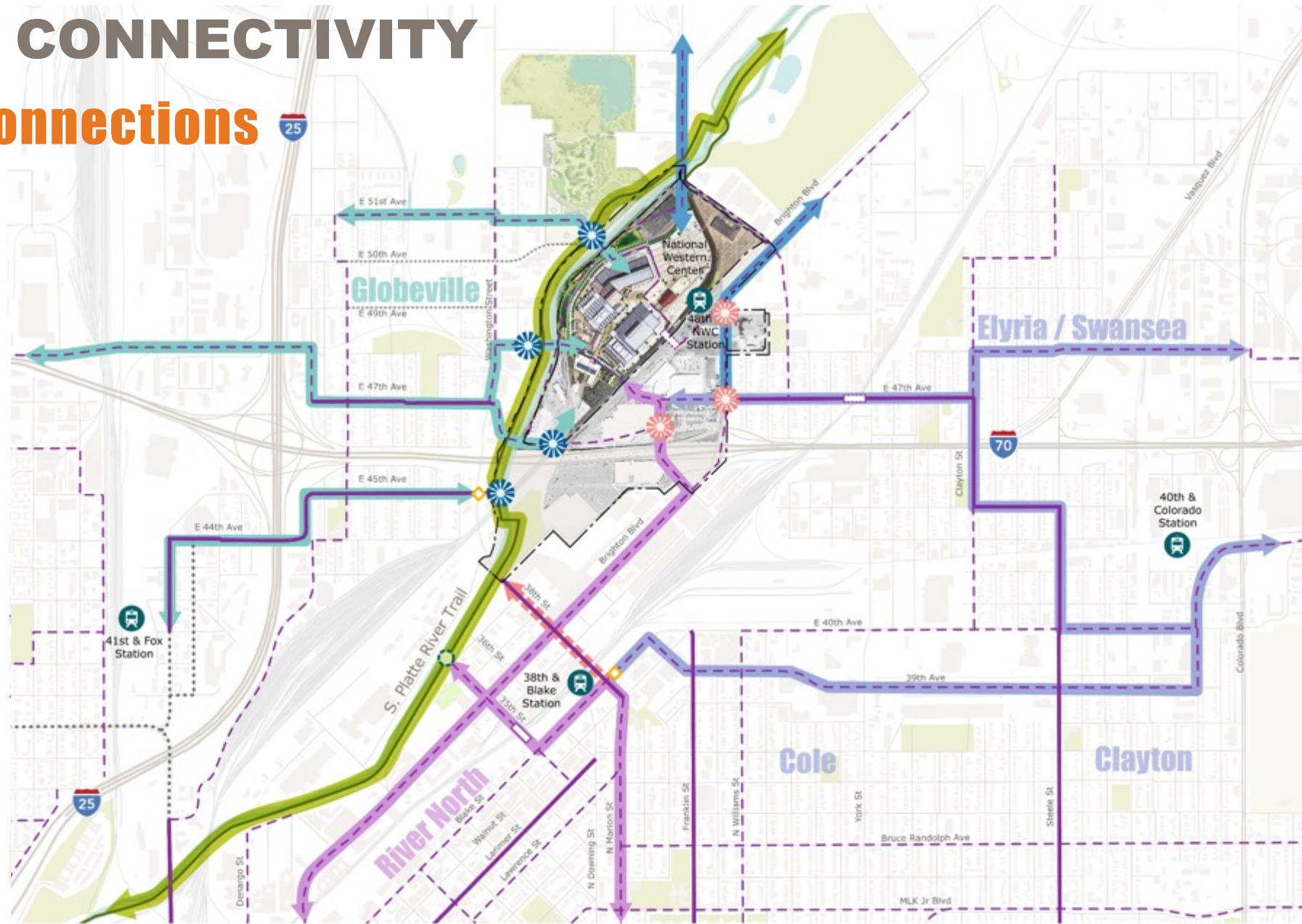
The South Platte River trail provides the only direct regional connection to NWC from areas north and south. The alignment is planned to remain along the western edge of the river but some modifications are expected as a part of the planned improvements at Capito-Sanguinette Park.

S. Platte River Regional Trail

#### Neighborhood Connection to NWC

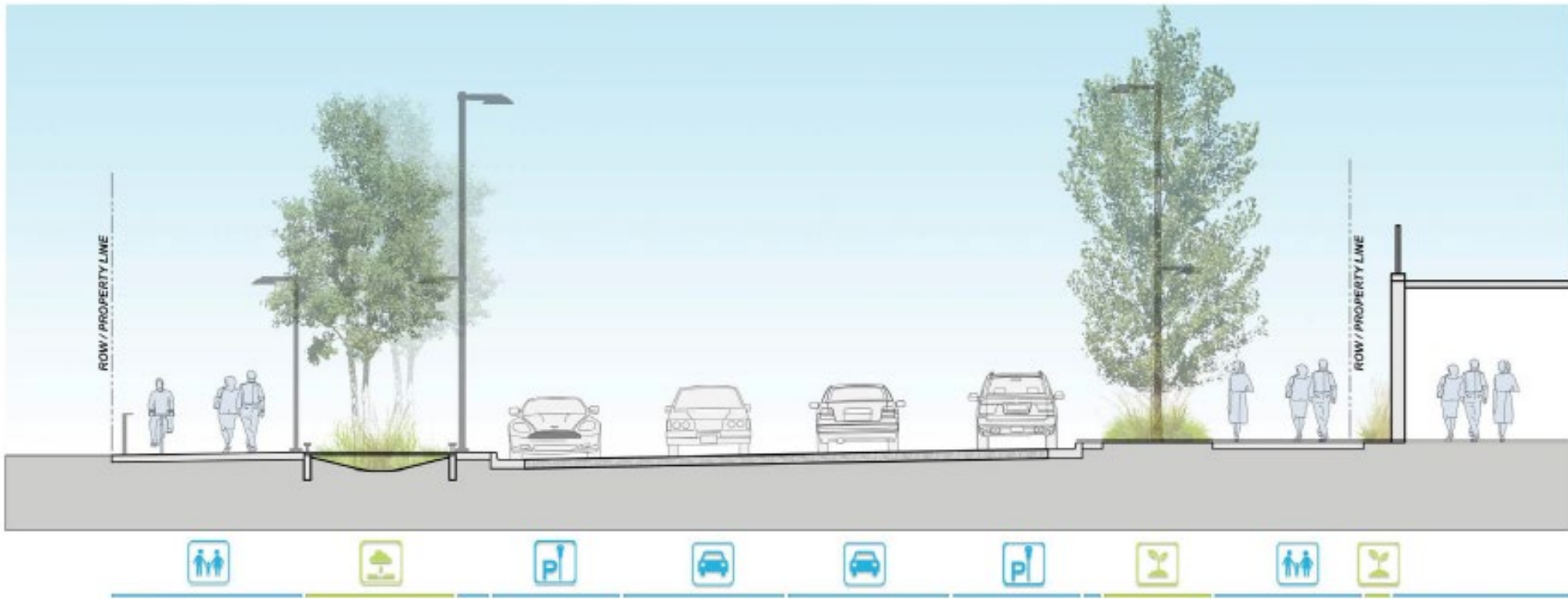
Neighborhood connections include anticipated primary bike routes to and from adjacent neighborhoods. Routes were selected based on their ability to provide a direct connection to NWC from each neighborhood or adjacent residential area.

- Connection from Globeville
- Connection from RiNo
- Connection from Elyria/Swansea, Cole and Clayton
- Connection from North



# RIVERFRONT EDGE

## National Western Drive – Proposed Section



# CAMPUS PLACEMAKING



## Health and Wellness Public Realm Study





# PUBLIC ART

## Public Art Opportunity Sites

- Multiple opportunities for public art within the riverfront and at the river bridges
- Specific riverfront opportunities for local artists
- Arts and Venues leading the effort to set up the public art selection committees



# RIVERFRONT PROGRAMMING

**Telling the Story of:  
The River Through Education and Play**



IMAGINE. DISCOVER. CULTIVATE.





# PROGRAMMING IDEAS

- Wetlands overlook, seating and boardwalk
- Expanded riparian areas
- Amenity zone along National Western Drive
- Picnic grove
- Walks and trails
- River access
- Sheep Bridge plaza
- Learning lab/water education center/Nature play
- Café/Beer Garden/Restaurant
- Outdoor classroom
- Event lawn/Children's play area
- Patios and plaza spaces
- Public Art
- Other ideas from Cultivate and the Public



# RIVERFRONT CONCEPT DESIGN



# RIVERFRONT OPEN SPACE

SCHEDULE	
<b>April 2019-May 2019</b>	Program refinement and review and input by NWC Authority and potential funding partners to identify potential additional programming opportunities
<b>June 2019-August 2019</b>	Development of potential 3 <sup>rd</sup> Party Agreements
<b>August 2019-April 2020</b>	Riverfront Design (30, 60, 100% documentation)
<b>February 2020-July 2020</b>	Construction Procurement
<b>February 2021-February 2023</b>	Riverfront Construction



# CAMPUS-WIDE SERVICES

- The vision of the NWC campus is to have a consistent set of services to enable a seamless experience and operational efficiencies.
- NWC Framework Agreement describes campus-wide services and identifies examples.
- NWCO working with the Authority to identify and advance campus-wide service opportunities, focusing on those that inform construction.





# CAMPUS-WIDE SERVICES



## ENERGY & WATER

### INITIATIVE

Campus Energy

*Predevelopment Phase*

### PARTNERSHIPS

Xcel Energy  
Metro Wastewater  
Denver Water



## CONCESSIONS (FOOD, BEVERAGE & MERCHANDISING)

*Strategy in development based on an analysis of various service implementation options.*



## INFORMATION TECHNOLOGY & SECURITY

*Trunk infrastructure design. Potential RFI in mid 2019.  
Draft security master plan in review*



## OUTDOOR MEDIA ADVERTISING

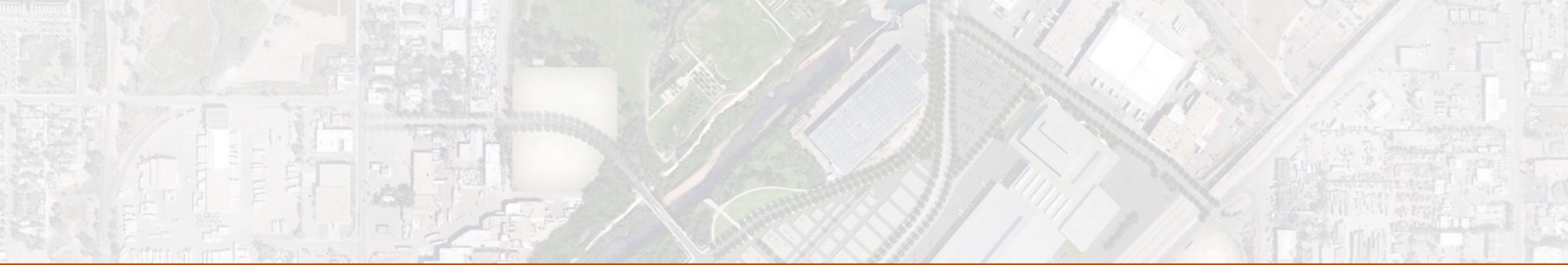
*Coordinate with Community Planning and Development and Authority to determine timing of future district sign plan.  
Potential RFI in late 2019*



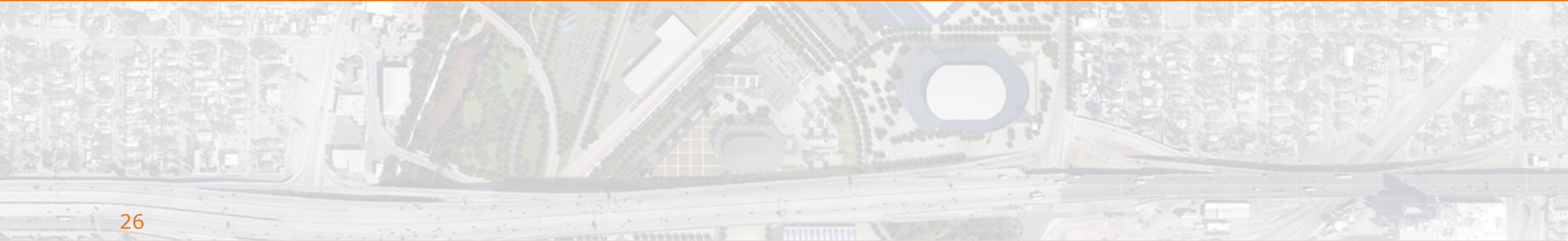
## SOLID WASTE

*Solid waste master plan to be completed in mid-2019.*





# TRIANGLE UPDATE



# TRIANGLE UPDATE

<b>RFQ Process Milestones</b>	
Triangle Opportunity Day	February 11, 2019
RFQ Issuance	March 1, 2019
Pre-SOQ One-on-One Meetings	Week of April 1, 2019
SOQ Submittal Deadline	May 23, 2019
Announcement of Shortlisted Proposers	July 2019
<b>RFP Process Milestones</b>	
Issuance of Draft RFP	Fall 2019
One-on-One Meetings	Winter 2019 – Spring 2020
Proposals Due	Summer/Fall 2020
Selection of Preferred Proposer	Winter 2020
City Council Approval	Winter 2020





THANK YOU!

[www.nationalwesterncenter.com](http://www.nationalwesterncenter.com)